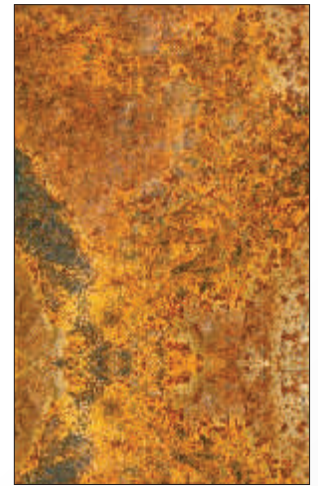


SMAC[®] ANTICORR RC

WATER BASED RUST CONVERTER

Untreated



Treated with
SMAC[®] ANTICORR RC



DESCRIPTION:

SMAC[®] ANTICORR RC is a polymer based rust converter-cum-inhibitor for steel, which converts rust into non rusty stable organometallic complex and protects steel from further corrosion. The Intelligent Chemicals in **SMAC[®] ANTICORR RC** react with the steel molecules and produce a thin protective film over the surface.

ACTION MECHANISM:

After application of **SMAC[®] ANTICORR RC** to the steel surface, the rust gets converted into a stable, non-corroding black film layer over the surface. The polymer molecules form an elastic protective film over the organo-metallic complex layer. This dual protection resists further corrosion promoting molecules from reaching the base steel surface. Hence, further corrosion stops. This protective film also acts as a primer for further coat on the treated steel.

ADVANTAGES:

- Eco friendly.
- Non toxic.
- Nonflammable.
- Eliminates costly pre-treatments like phosphating, sandblasting and red oxide coating.
- Reduces labour cost.

ANTICORR RC

WATER BASED RUST CONVERTER

APPLICATION PROCEDURE:

First, remove all loose particles using wire brush. Clean the surface by water and/or suitable solvent to remove oil, grease & contaminants on the surface. Then apply **SMAC® ANTICORR RC** which converts rust within 30 minutes during clear days. In humid weather, time may be more. A uniform black surface is formed as shown in the figure. Let the film dry completely. Now, the steel is ready to receive further coating treatment. The black film also acts as a primer coat with all the benefits of a regular paint primer.

APPLICATION AREAS:

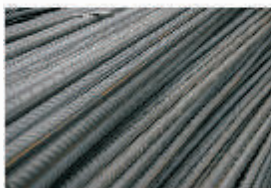
- Chemical Plant Pipes & Vessels
- Construction Project Steel Elements
- Ships
- Railways
- Automobiles
- Industrial Steel Structures
- All other Industries where Corrosion is present.

COVERAGE : 150 sq.ft. in one coat

PACKING : 20 kg & 50 kg HDPE containers.

SHELF LIFE : 12 months in originally sealed containers.

CAUTION : Protect from splashes on skin & eyes. Use protective gear like goggles, hand gloves etc. In case of accidental splashing, wash with plenty of water. In case of ingestion, do not induce vomiting & immediately seek medical assistance.



Disclaimer: The information given in good faith is based on our in-house testing & site results. However, we do not guarantee the same as the conditions of actual use are beyond our control.

WE HAVE OUR OWN PROJECT DIVISION & UNDERTAKE LARGE PROJECTS.

SM
ADHESIVES

FACTORY :
Plot No. B-82,
Lote M.I.D.C., Ratnagiri,
Maharashtra - 415 722.

MUMBAI OFFICE :
Shop No. 4, Ganga Bhuvan,
SRPS Road, Opp. Chetan Apts.,
Bhandup (W), Mumbai.